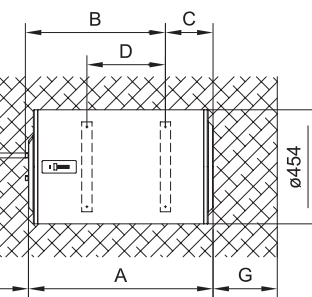
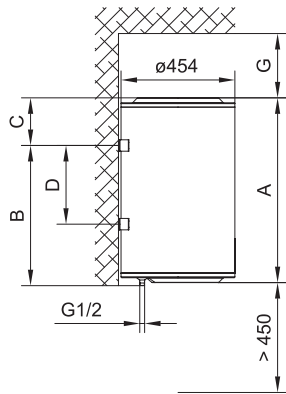


ACTIVE MULTIFIX

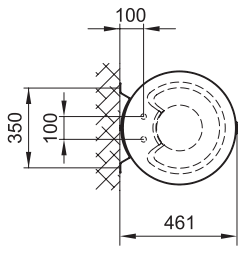
Electric water heater, horizontal or vertical installation





VERTICAL INSTALLATION



HORIZONTAL INSTALLATION



Technical Features

- ▶ Vertical or horizontal installation with connections to left side.
- ▶ Enamelled steel tank with anti-corrosion protection.
- ▶ Magnesium anode.
- ▶ Dielectric hoses with high mechanical resistance.
- ▶ Reinforced, sheathed, independent heating elements.
- ▶ Control panel led with temperature level selected and errors signaling.
- ▶ Water heater On/Off and temperature adjustment key.
- ▶ 7 LED temperature indicator.
- ▶ Operation indicator in ECO SMART mode. 
- ▶ Led indicator in Frost-Protection temperature level. 
- ▶ Self-learning function.
- ▶ “Dry-Firing” protection that prevents turning on the water heater if it is not filled with water before connecting.
- ▶ Safety thermostat and overheating protection.
- ▶ Non-return and pressure relief valve.
- ▶ High quality insulation against heat losses.
- ▶ Supplied with 1m main cable and plug for electrical connection.
- ▶ Thermostatic valve offered as accessory.

ACTIVE MULTIFIX MODEL		GTF-80	GTF-100	GTF-150
Capacity	L	80	100	150
Output	W	2000	2000	2000
Current	A	8.7	8.7	8.7
Voltage		230 V	230 V	230 V
Frecuency	Hz	50	50	50
Insulation		Clase I	Clase I	Clase I
IP degree		IP24	IP24	IP24
Colour		Blanco	Blanco	Blanco
Average consumption to keep water at 65 °C ⁽¹⁾	kWh/24h	1.85	2.20	3.20
Heating time 65 °C from 10 °C		2 h 37 min	3 h 16 min	4 h 54 min
Quantity of water available with 40 °C mixture ⁽²⁾	L	116	137	213
Water connections		1/2"	1/2"	1/2"
Net weight without water	kg	30	34	50
Dimension A	cm	82	96.5	133.5
Dimension B	cm	61.5	76.5	111.5
Dimension C	cm	21	20.5	22.5
Dimension D	cm	34.5	49.5	84.5
Dimension G	cm	36	51	51
Diameter	cm	45.4	45.4	45.4
Depth including supports	cm	46.1	46.1	46.1
Ean code		8432336790423	8432336790447	8432336790461



Energy classification according to European Regulation 812/2013. (1) Valid values for an ambient temperature of 20°C and 65°C hot water temperature in the heater (Standard EN 60379: 2005). (2) Standard EN 50440.